

More traffic on Salt Mine Road?

Also concerned about safety of traffic on Salt Mine.

That area for Pasture. →

Flood irrigation is not efficient! Low water use is best

Are you going to plant trees?

How many Cabins?

Where is the parking lots/area?

Do you have your own horse?

Will equestrian center be open for use by private horse owners + trailer parking? horse camping?

What is this pasture area for?

How many Tent Sites? →

What about sewage disposal/waste in a flood plain?

HUGE Snakes in Remote Campy area.

Will there be fencing around perimeter?

What are the facilities or bathrooms?

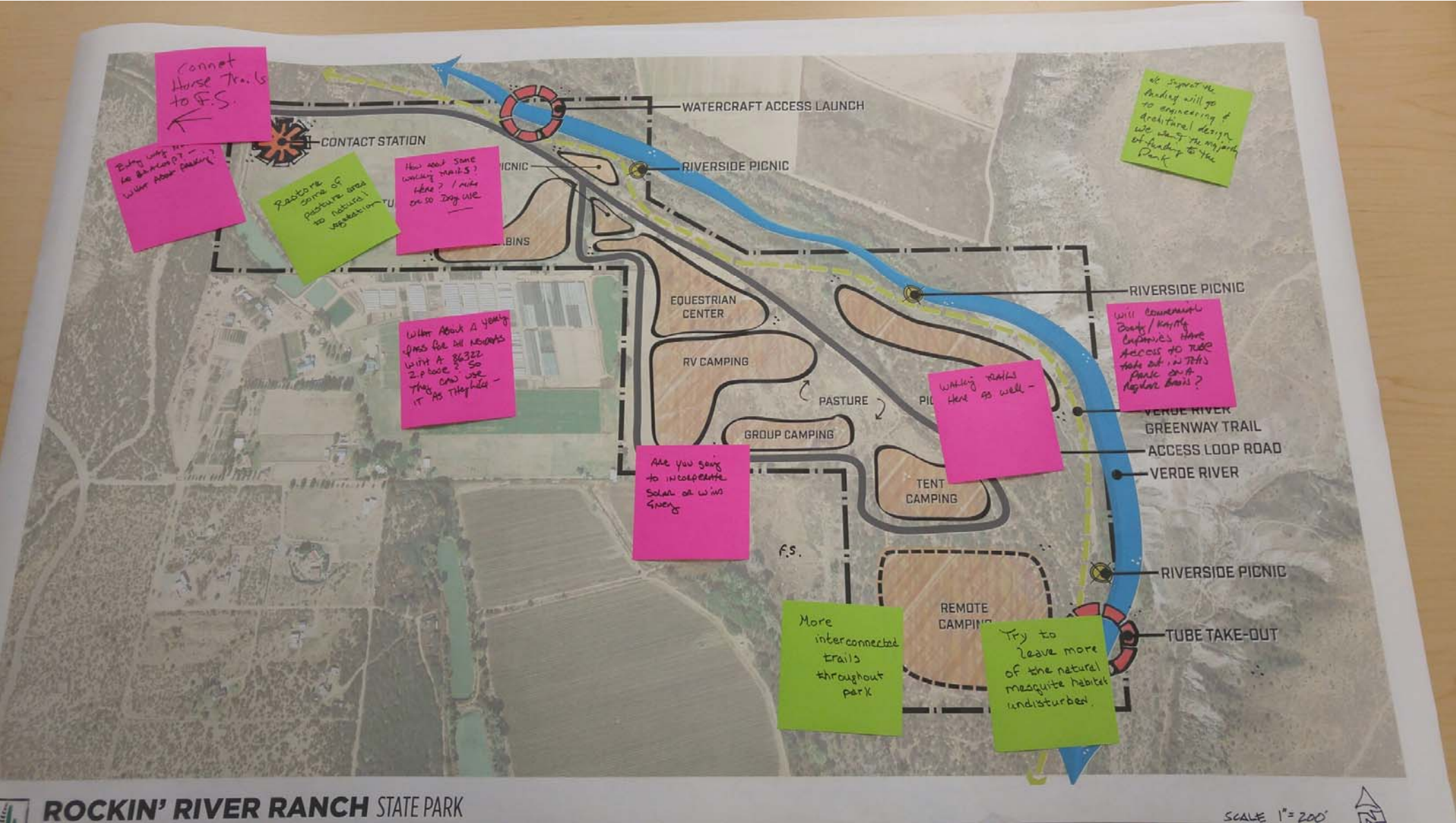
What is an Equestrian Center?

[Blank pink sticky note]

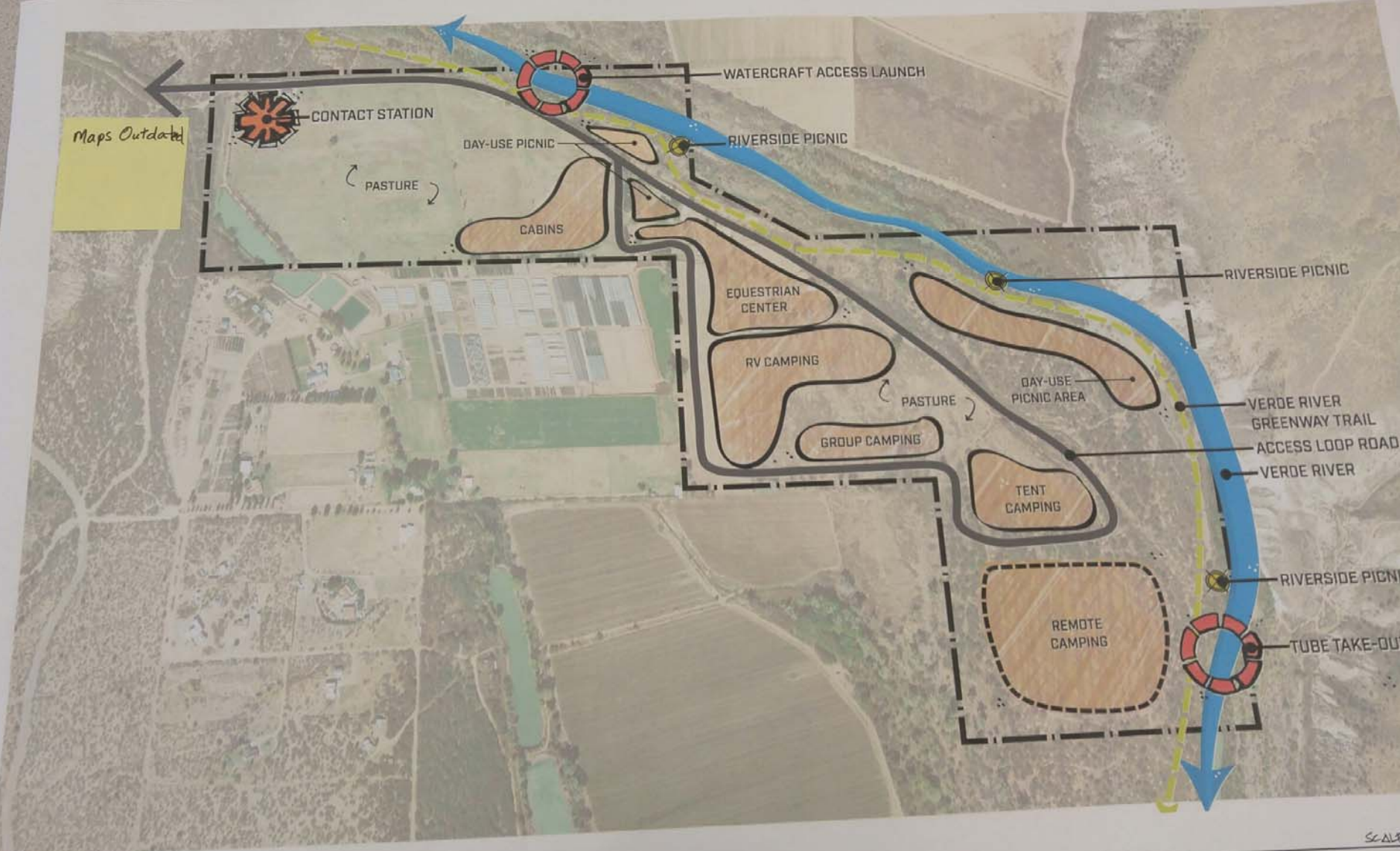
[Blank green sticky note]

Will there be a road to take out?

SCALE 1"=200'



Maps Outdated



SCALE

STATE PARK