

Nearby Parks

If you’re having a great time here, don’t forget to visit one of the two nearby state parks!

**Boyce Thompson Arboretum State Park** (32 miles) Encompassing 323 acres, the Arboretum is Arizona’s oldest and largest botanical garden. It features plants from the world’s deserts, towering trees, captivating cacti, sheer mountain cliffs, a streamside forest, panoramic vistas, many natural habitats with varied wildlife, a desert lake, a hidden canyon, specialty gardens, and more. (520) 689-2723

**McFarland State Historic Park** (37 miles) Named after Governor Ernest W. McFarland, who signed the bill to form Arizona State Parks & Trails, the building has served as the county courthouse, sheriff’s office, and jail until converting to a county hospital. (520) 868-5216



**Lost Dutchman State Park**  
6109 N Apache Trail, Apache Junction, AZ 85119  
**(480) 982-4485 | 1-877-MYPARKS**  
[azstateparks.com/lost-dutchman](http://azstateparks.com/lost-dutchman)  
**AZStateParks**  
Like/Follow/Watch us on:





Named after the fabled lost gold mine, **Lost Dutchman State Park** is located in Apache Junction in the Sonoran Desert, 40 miles east of Phoenix. Several trails lead from the park into the Superstition wilderness and surrounding Tonto National Forest.

Take a stroll along the Native Plant Trail or hike the challenging Siphon Draw Trail to the top of the Flatiron. Depending on the year’s rainfall, you might be treated to a carpet of desert wildflowers in the spring. Stay in our new comfortable camping cabins and enjoy a weekend of camping!

Thank you for visiting!



1-877-MYPARKS | [azstateparks.com](http://azstateparks.com)

Cabins

New camping cabins are available for reservation. Each cabin has two covered porches to fully enjoy the beautiful desert landscape. Cabins are furnished with a full-sized bed, two sets of bunk beds, a table with chairs, electricity, lights, heating and air conditioning, and a locking door. Campers must supply their own linens or sleeping bags. Restrooms and showers are within walking distance. Cabins sleep up to six people.

Reserve a camping cabin and start your park adventure at [azstateparks.com/cabins](http://azstateparks.com/cabins).

Hiking Trails

**Native Plant Trail:** A 0.25-mile trail near the Visitor Center that features desert plants along an accessible paved trail.

**Discovery Trail:** This 0.7-mile trail connects the campground and day-use areas. The trail features information signs, a wildlife pond, bird feeder, and viewing bench.

**Treasure Loop Trail (#56):** A 2.4-mile round trip, this trail is rated moderate and has elevation changes of 500 ft. It ends at either of our beautiful picnic areas.

**Prospector’s View Trail (#57):** This 0.7-mile trail is rated moderate. It connects Siphon Draw Trail to Treasure Loop Trail and also connects to Jacob’s Crosscut Trail.

**Jacob’s Crosscut Trail (#58):** At 0.8 miles, this trail is rated easy, and runs along the base of the Superstition Mountains. It connects Treasure Loop Trail with Prospector’s View Trail and continues 4.5 miles past the park area along the mountain’s base.

**Siphon Draw Trail (#53):** The trail is 4 miles round-trip and winds into a canyon known as Siphon Draw with a 1,000-ft elevation gain to the basin area.

- NOTE: Hikers can continue on the trail to the **Flatiron**, but the trail is not maintained past the basin. There are elevation gains of over 2,000 feet for 1 mile from the basin. The trail is very steep and difficult. Please allow 5-6 hours to hike to the top and return. Six miles round-trip.

Things to Know: Park Guidelines

While visiting the park, please help us protect this special space for your future enjoyment.

General Information

- Please practice “Leave No Trace” and pack out what you bring in.
- For everyone’s safety, please drive your vehicle only on paved surfaces and stay on designated trails.
- For your safety, please don’t use glass containers in the park.
- All of our parks adhere to firearm and hunting regulations. Please familiarize yourself with this information.

Fires

- For your safety, please keep your fire attended to and only in approved, designated fire rings or grills.
- Firewood is for sale in our park store; you may not gather firewood in the parks.
- Please don’t use fireworks in the parks!
- You can find up-to-date fire restrictions at [azstateparks.com/lost-dutchman](http://azstateparks.com/lost-dutchman).

Camping

- Your campground is designed for up to six adults and up to 12 people total. Cabins are designed for up to six people total. Please enjoy your experience!
- We have designated dump facilities at the park for your convenience.

Pets

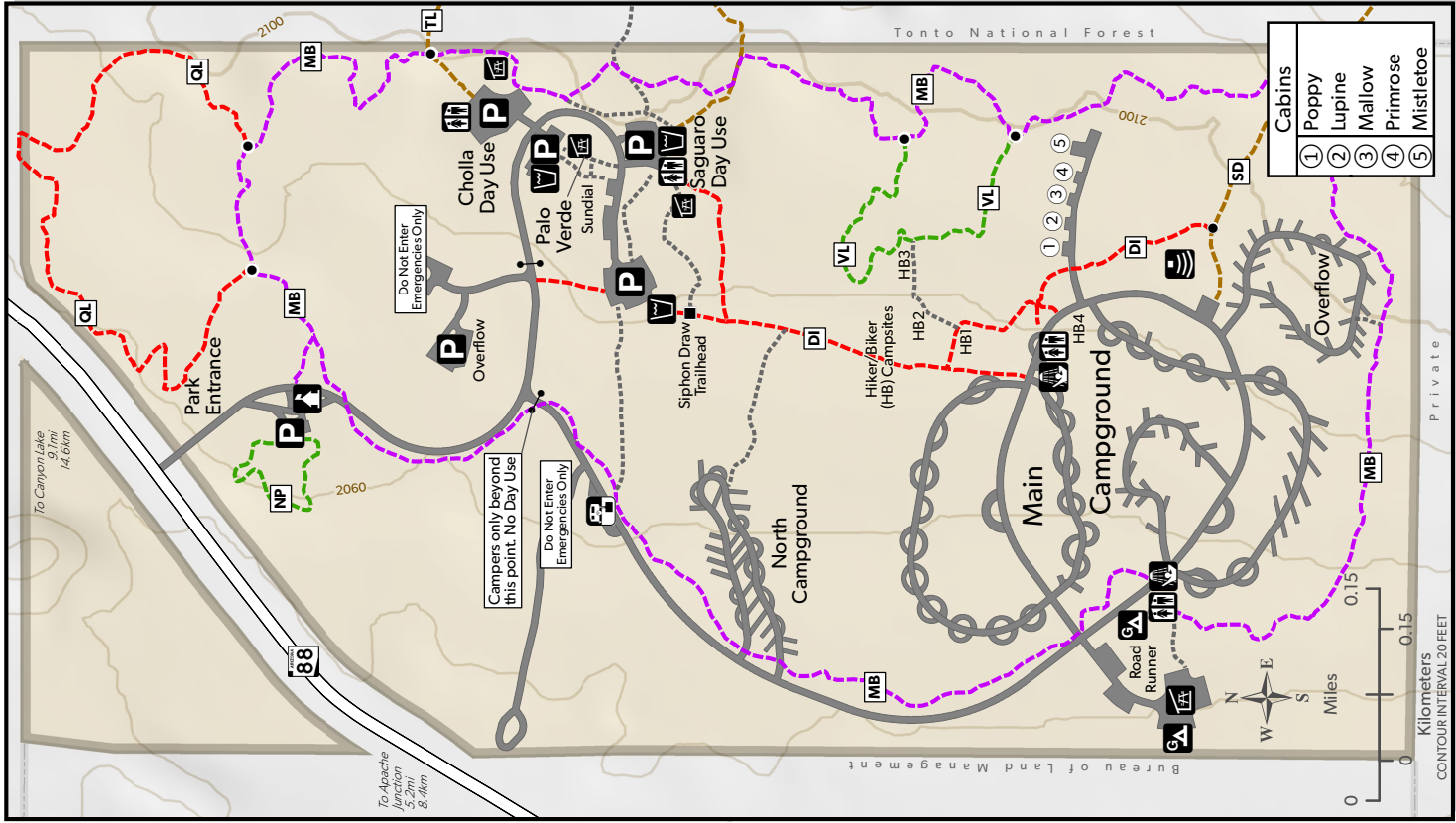
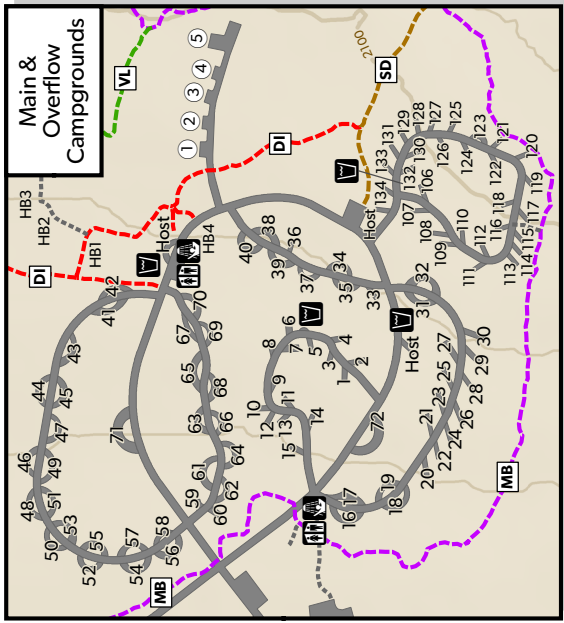
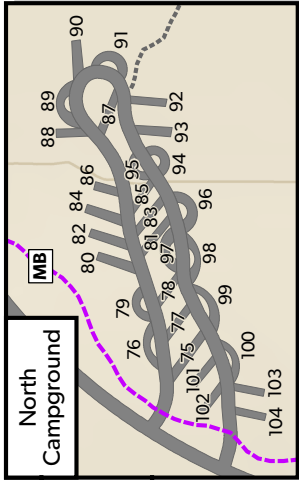
- For the enjoyment of your visit and the consideration of our other guests, we ask that you keep your pet on a maximum six-foot leash at all times.
- For additional information related to pets, we encourage you to visit our website or ask park staff.

We hope you have an enjoyable and safe experience in our parks! All guidelines for this park can be viewed on our website at [azstateparks.com](http://azstateparks.com).

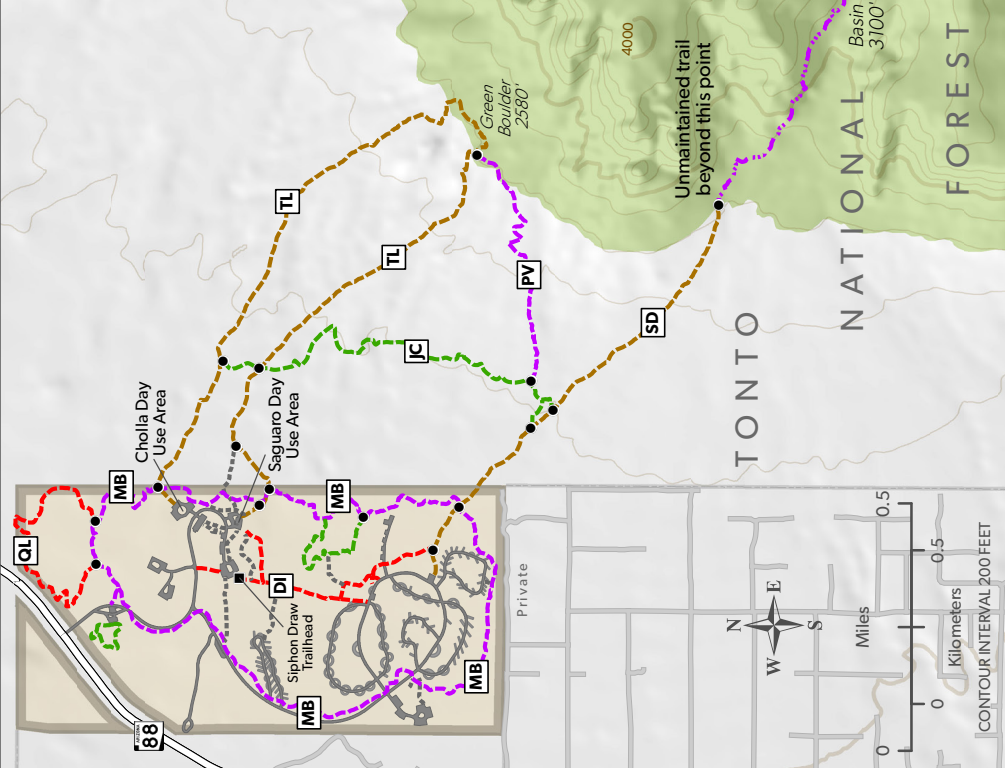


LOST DUTCHMAN  
STATE PARK

- Amphitheater
- Contact Station
- Drinking Water
- Dump Station
- Group Campground
- Ramada
- Parking
- Point of Interest
- Restroom
- Shower
- Cabin
- Junction
- Trailhead
- Trail
- Primitive Trail
- Gate
- Park Boundary
- Wilderness



Lost Dutchman Superstition Mountains Trail System



Trail Code	Trail Name	Length One Way mi	Length One Way km	Uses*
DI	Discovery	0.4	0.7	DH
JC	Jacob's Crosscut	1.0	1.6	BDEH
MB	Mountain Bike	2.7	4.3	BDH
NP	Native Plant	0.2	0.4	DH
PV	Prospector's View	0.6	0.9	BDEH
QL	Quail Loop	0.8	1.3	BDH
SD	Siphon Draw #53	1.0	1.6	DEH
US	Upper Siphon Draw	1.3	2.1	H
TL	Treasure Loop	2.3	3.7	BDEH
VL	Vista Loop	0.4	0.6	BDH

\* B=Mountain Bike, D=Dog, E=Equestrian, H=Hike

SUPERSTITION

WILDERNESS

Superstition Mountains

Ironview Peak  
5024'

Flatiron  
4592'

NATIONAL FOREST

Basin  
3100'