



# Natural Areas Program Advisory Committee

## NAPAC' s Mission

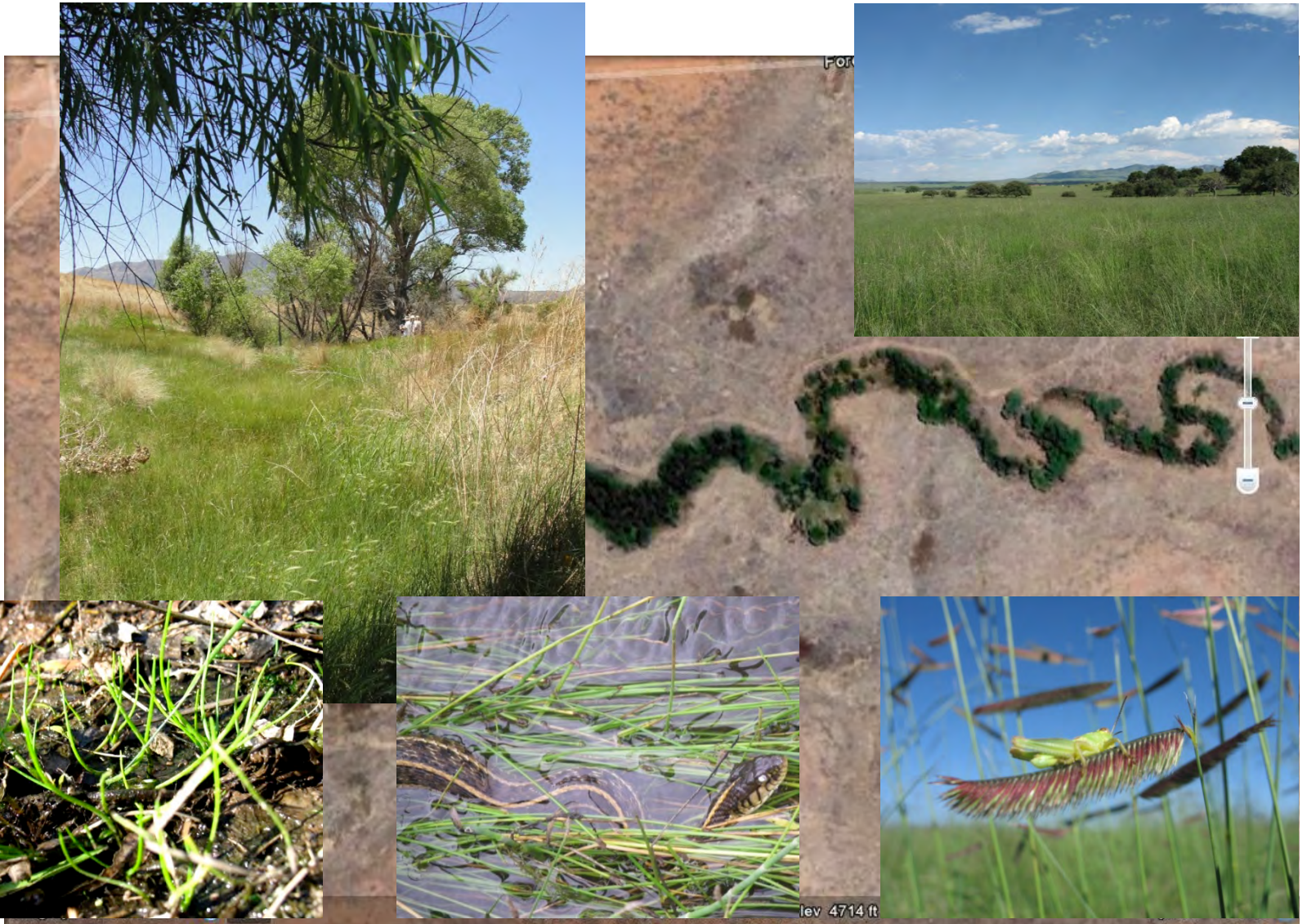
To serve in an advisory capacity to the State Parks Board; providing scientific and natural resource management expertise; in efforts to protect, conserve and maintain natural features, biological communities, ecological function, and other aquatic and terrestrial resources.

# San Rafael State Natural Area

## A Management Framework Plan



# SRSNA Natural Setting



# SRSNA Cultural Setting





# SRSNA Vision and Desired Future Conditions

- Santa Cruz River Headwaters
- Unfragmented Riparian and Grasslands
- Habitat for Native Flora and Fauna
- Open Space and Rural Ranching
- Science-based Management
- Robust Partnerships

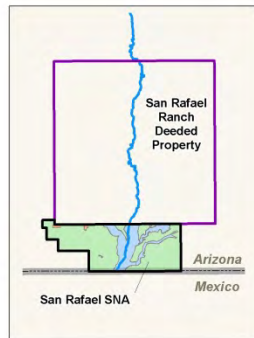
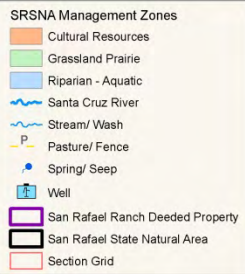


# Overarching Goals

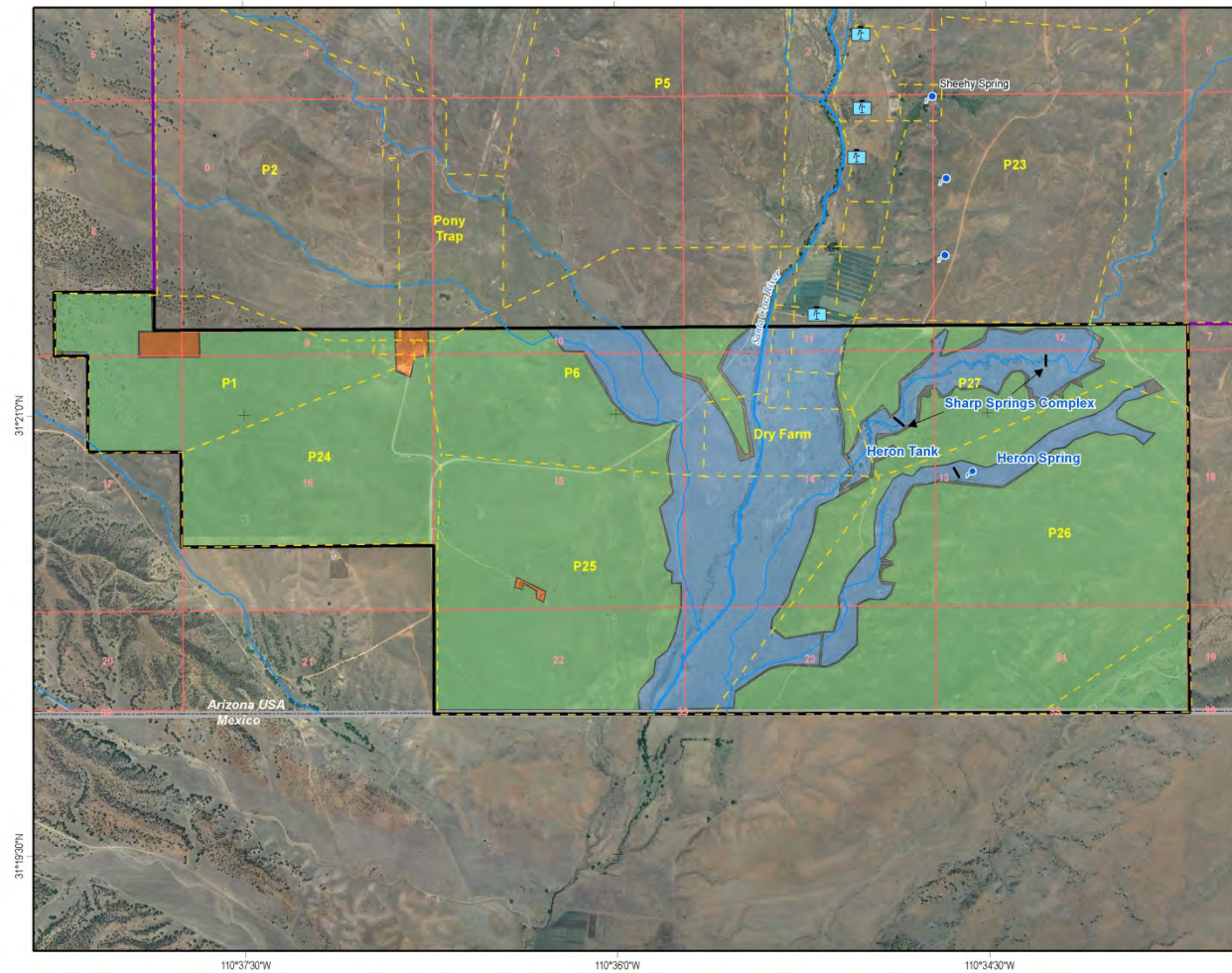
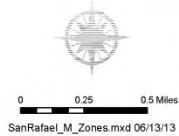
- Protect Unique Habitats and Wildlife
- Protect Hydrologic Function and Water Rights
- Protect Historic and Cultural Resources
- Develop Partnerships
- Coordinate with Adjacent Landowners
- Inventory and Monitor Natural Resources
- Maintain Important Infrastructure

# Management by Zones

## San Rafael State Natural Area (SRSNA)



(NAIP Aerial Imagery 2010, 1 Meter)





# Decision Tool for Proposed Actions

- Designed to assist managers in understanding how proposed actions meet the Vision, Goals and Objectives
- Description of Project
- Environmental/Cultural Assessment Checklist
- Manager Approvals





# SRSNA Framework Comments

- Draft Framework sent to 10 stakeholders
- Comments received from 3
- Edits made to revise document
- All comments documented along with responses
- Comments outside scope of Framework referred to State Parks for further review
- Thank you letters back to commentors



## Recommended Action

Approve the implementation and use of the San Rafael State Natural Area Management Framework beginning immediately, and authorize staff in collaboration with NAPAC to revise the document as needed.

# Questions?

